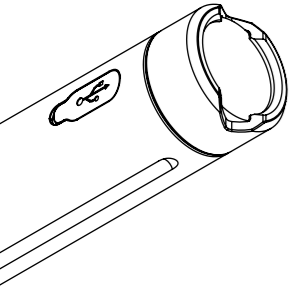
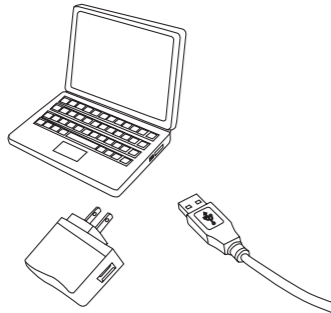


Charging time: 5hrs



**Fully charge  
light before  
use**



### Charging

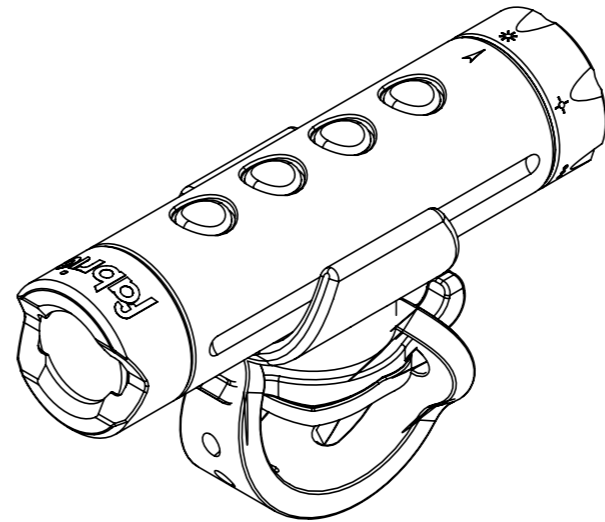
1. Make sure light is turned OFF
2. Connect the light to your PC via the USB cable or charge it via a wall outlet with a 5V USB adaptor (not included).

The light button glows red during charging, and turns off when fully charged.  
The on button will glow red to warn you when only 15% of charge remains.

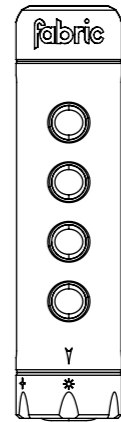
# fabric®

[fabric.cc/user-guides](http://fabric.cc/user-guides)

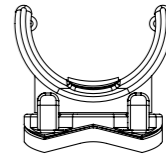
## LUMABEAM USER START GUIDE



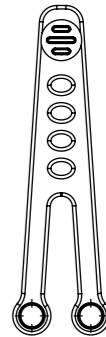
### What's in the box?



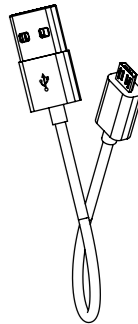
1x light



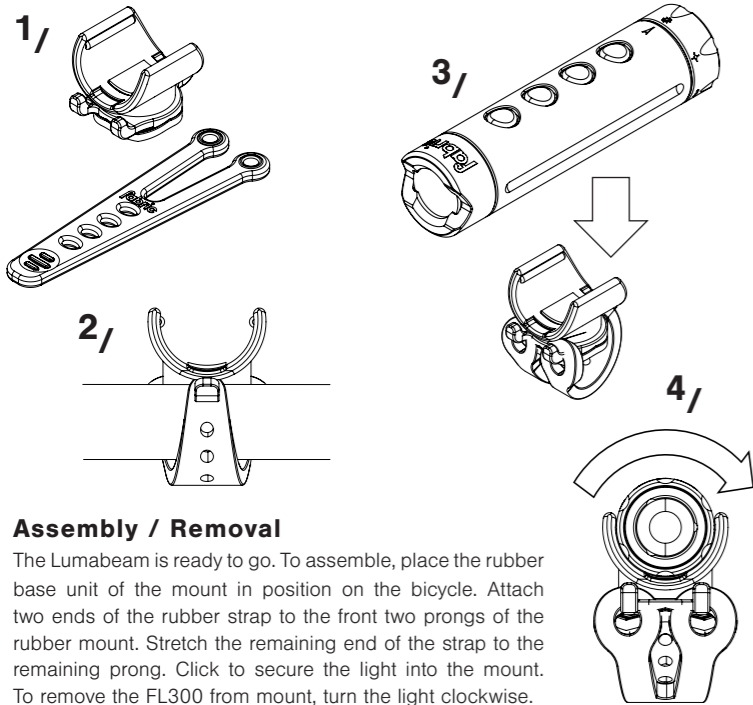
1x mount



1x strap

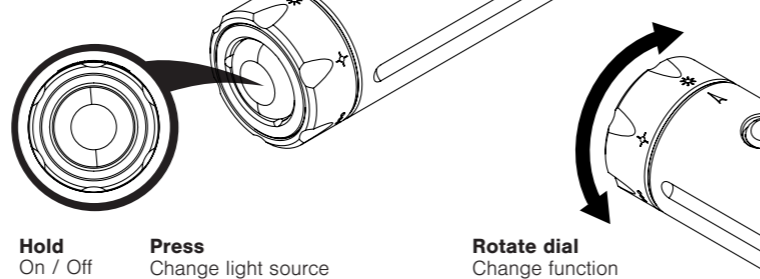


1x USB cable



### Assembly / Removal

The Lumabeam is ready to go. To assemble, place the rubber base unit of the mount in position on the bicycle. Attach two ends of the rubber strap to the front two prongs of the rubber mount. Stretch the remaining end of the strap to the remaining prong. Click to secure the light into the mount. To remove the FL300 from mount, turn the light clockwise.



**Hold**  
On / Off

**Press**  
Change light source

**Rotate dial**  
Change function



**On / Off / Function**

**3 light sources: Main light / White LED / Red LED**  
**Main beam has 4 functions: Full / Med / Fast flash / Flash**

	Full power
	Med power / Longer burn time
	Fast flash / Increase burn time
	Flash / Maximum burn time

<b>Led Type</b>	1x Cree XP-E LED + 4x bright LEDs
<b>Output Lumen</b>	Full – 300 lumen Med – 60 lumen Fast flash – 10HZ Slow flash – 3HZ
<b>Light angle</b>	50-60 degrees
<b>Run time (Main LED)</b>	Full - 2hrs Med - 3hrs Fast flash - 6hrs Flash - 6hrs
<b>Run time (Top LED)</b>	Full - 6hrs Med - 14hrs Fast flash - 46hrs Flash – 58hrs
<b>Battery type</b>	3.7V, 650 Lithium polymer battery

<b>Battery indicator</b>	The indicator will glow red when charge is below 15%
<b>Charging</b>	Micro USB charging
<b>Charging indicator</b>	The button glows red during charging, and turns off when fully charged.
<b>Waterproof level</b>	IPX5
<b>Drop test</b>	1 Metre
<b>Switch</b>	Power button + indexed dial
<b>Certifications</b>	CE, ROHS

### Warning

Store device in a cool dry area.  
Do not shine directly into the eyes.  
Keep out of reach of children or pets.  
Do not short- circuit the charger or the battery.  
Do not use or handle the device while charging.  
Never crush or puncture the battery.  
Never place the battery or device on, or in, heating units.  
Do not dispose of battery or device in a fire.  
Fully charge the light/battery before use if not used for over 3 months.

### Warranty

Fabric product is covered by a warranty of ONE YEAR commencing at date of purchasing from an authorized Fabric dealer. This warranty does not cover faults caused by deliberate damage, violent impact or unauthorized dismantling. Warranty service should only be undertaken by your retailer and from there, the distributor in your region. If you attempt to repair or modify the product by yourself, it will not be covered by warranty. Prior to returning, please contact your Fabric Authorized Service Provider (place of purchase). All returned products must be packed carefully. Please enclose the warranty certificate (Proof of purchase) together with a detailed description of your claim.